

## Better, Faster Emergency Care for More People




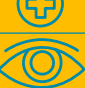


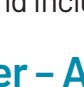
- Serve 25% more patients annually
- Reduce waiting times by more than half
- Divert fewer patients to other hospitals
- Improve safety and security
- Increase flexibility to serve pediatrics, behavioral health patients and crisis situations

### The Problem

Opened in 1994, our current emergency facilities will not meet the future needs of our community's growing and aging population. As more people arrive with more complex needs, the average patient waits nearly an hour to see a caregiver. Some wait even longer. Too often patients coming by ambulance must be sent elsewhere because our department is full. Without new facilities, these problems will rapidly grow worse.

### The Solution

Re-imagine our emergency facilities to make them larger *and* smarter.

Current		Re-imagined
56-minute average wait time with 83,000 visits/year. <b>Waits could grow to three hours.</b>		25-minute average wait time with 105,000 visits/year
58 treatment spaces		84 treatment spaces, including a Flexible Care Zone
Single CT scanner creates diagnosis bottleneck		2 CT scanners eliminate bottleneck and speed diagnoses
Crowded, non-private triage		6 private spaces allow care to begin upon arrival
Staff has poor visibility of waiting area		Full-time visibility increases safety and security
Mix of aging monitoring technology		State-of-the-art seamless mobile monitors
Ambulances sent elsewhere 11% of the time		Ambulance diversions cut in half

### The Cost

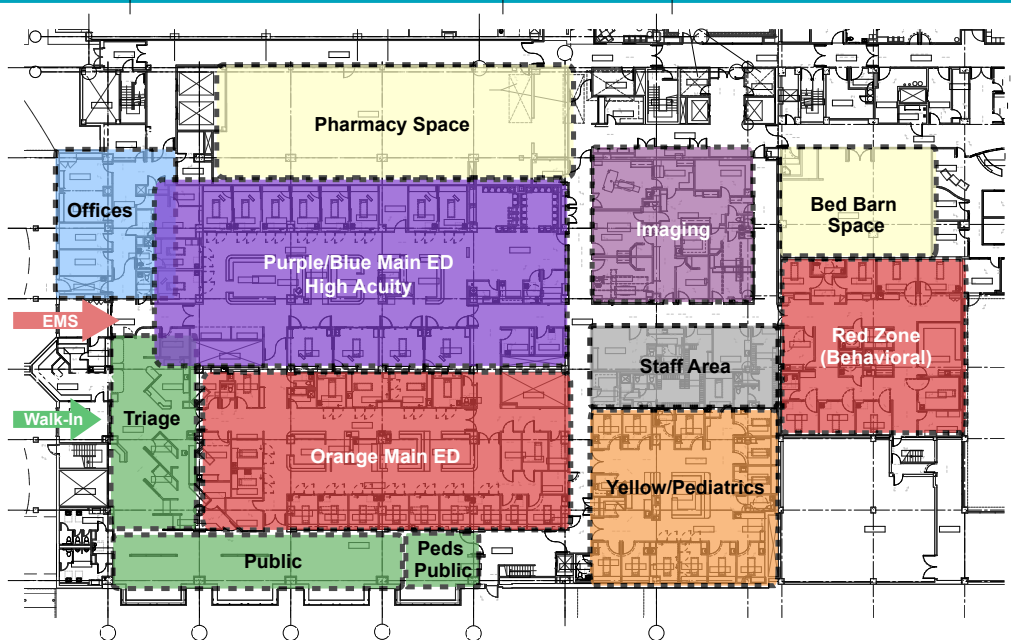
\$47 million: based on current market conditions and including significant allowances for escalation.

### Providence St. Vincent Medical Center – A Recognized Leader in Health Care

- Top 50 U.S. hospital two years in a row placing it in top 1% of hospitals nationwide
- Top 20% in emergency department patient satisfaction
- Eight-time winner of "Gold Plus" award for heart attack care
- Fastest stroke-to-needle care in Oregon
- Five-time winner of national "Excellence in Nursing" award

## Current Facility

- 58 Treatment Spaces
  - 33 Typical adult
  - 13 Pediatrics
  - 12 Behavioral health
- Single triage space
- Imaging bottleneck



## Re-imagined

- Bigger, Faster, Safer & More Flexible
- 84 treatment spaces
- Arrival Care (landing) Zone
- New Flexible Care Zone
- Added diagnostic imaging capacity
- Safer, more secure behavioral health area
- Fully-visible, safer waiting area



For more information contact

Kevin Finn

Executive Director

Providence St. Vincent Medical Foundation

kevin.finn@providence.org • 503-216-2226

